



**GERSAN**  
ELEKTRİK TİC. ve SAN. A.Ş.

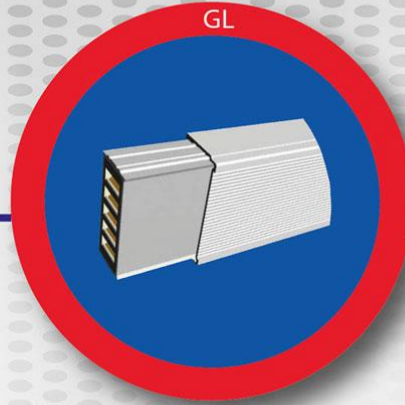
**BUSBAR BBT**  
SAVE30 Electric System



GNL

25-40A

40-160A



GL

160-400A



GGD

500-1000A



GGD



GR-CAST RESIN

500-6000A



GS-SUPER COMPACT



**ASTA**



**KEMA**

**V<sup>NL</sup>  
EIKI**



ISO 9001-14001-18001

**Busbar Trunking Systems**



### Why Gersan Busbar is preferable?

The low impedance prefabricated Busbar Trunking System shall conform to IEC 60439-1/2 STANDARDS from manufacturer having ISO:9001 certification & shall be suitable for use in installation conforming to ISE 364.

The Busbar Trunking System is ASTA certified & comprising of

- a) Standard switch board flange, b) Close type transformer connection unit, c) Straight length, d) Elbows, e) Tap-off unit, f) Fixing brackets, g) Distribution board, h) Connection unit, i) Reduction unit, j) Flexible copper links & k) Hanger etc.

### Type Tests:

Temperature Rise Limits

Dielectric Properties

Short-Circuit Strength

Effectiveness of the Protective Circuit

Clearance and Creepage Distances

Mechanical Operation

Degree of Protection

Electrical Characteristics

Structural Strength

Crushing Resistance

Resistance to Abnormal Heat

Resistance to Flame Propagation

Fire Barrier in Building Passing

EMC

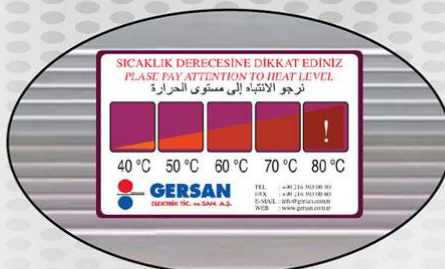


Figure: Heat Level



### Technical Chart

SL.	Series	Technical Specification	Cross-section Area (Standard )
01.	GNL	Installed for lighting & false floor, housing is aluminum, manufactured either 25A or 40A , IP55 Standard	Length: 3000mm, Width: 45mm, Height: 23mm
02.	GL	Low power distribution, manufactured with 5 conductors, aluminum housing supplies decorative look, 99.99% conductivity rich conductor, IP55 Standard	Length: 3000mm, Width: 62mm, Height: 28mm
03.	GGD (160-400A) & (500-1000A)	Current range between 160-1000A, save 25% compared with 3 meters, each length 8 plug-in's, dust-proof covers allow only box insert, IP50 or IP55 Standard	Length: 4000mm, Width: 191mm & Height: 65mm (160-400A) & 94mm (500-1000A)
04.	GS - Super Compact	Production range is 500-6000A, conductors are tin plated, for its entire aluminum housing electrical efficiency with high heat dissipation, IP55 & IP65/67/68 Standard	Length: 4000mm, Width: 130-765mm, Height: 157mm
05.	GR - Cast Resin	Production range is 500-6000A, conductors are tin plated, design for environmental factors, IP68 Standard	Length: 4000mm, Width: 170-660mm, Height: 118mm





## TROLLEY BUSBAR SYSTEM

**Polarvista** has a professional “Workshop assignment from the layout process design and other electrical fixtures, and a qualified professional electrical installation and commissioning”. The team for your modern workshop from visual effects, practical effects to green energy have reached a new height. Lighthouse electrical installation safety, energy conservation, aesthetics, is Polarvista people on their own requirements.



Single-phase, three-phase, dual socket



Single-phase socket



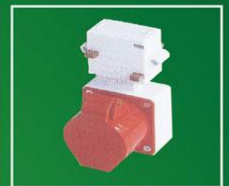
Three-phase socket



Switch



Crop sliding socket



Five-wire safety socket



Straight



Head



Elbow



Tee



Stone



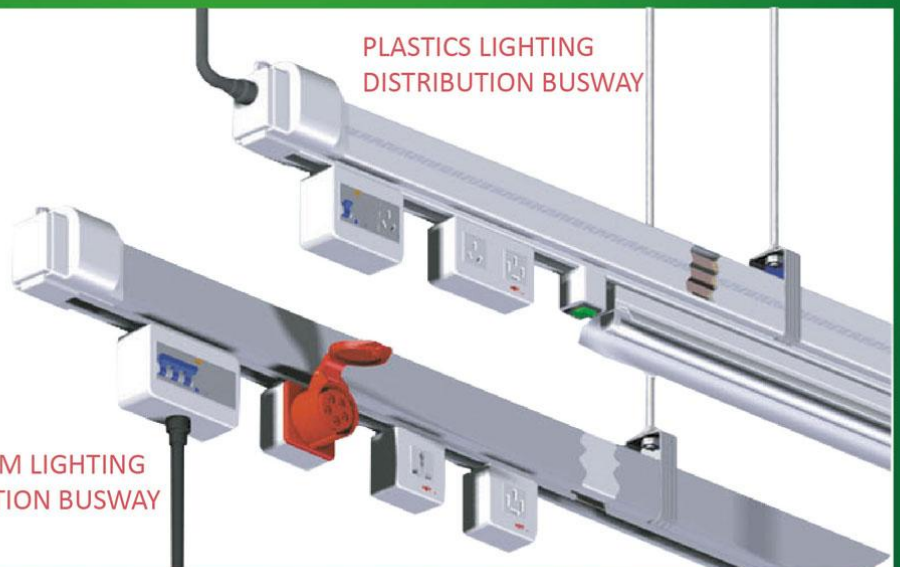
Hanging folders



**Safety**  
**Practical**  
**Flexible**  
**Energy saving**

THIS PRODUCT CAN  
PROVIDE INDEPENDENT  
OR COMBINED  
USE OF LIGHTING  
AND POWER

ALUMINUM LIGHTING  
DISTRIBUTION BUSWAY



Widely used in garment industry and concentrated power supply

## LIGHTING & POWER EQUIPMENT



**Polarvista** has a professional "Workshop assignment from the layout process design and other electrical fixtures, and a qualified professional electrical installation and commissioning". The team for your modern workshop from visual effects, practical effects to green energy have reached a new height. Lighthouse electrical installation safety, energy conservation, aesthetics, is Polarvista people on their own requirements.



L-type beam fastener  
(galvanized)



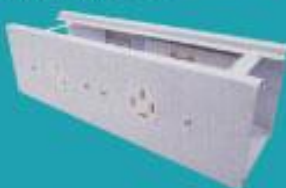
Lighthouse "H" type  
hanging pieces



C type steel  
fixing unit



Triangle ceiling fan and Promise governor (including hooks,  
extended boom and wiring installation)



Stands dedicated round  
legs socket (380V/16A)



Circular tripod socket  
(220V/16A)



Round an open switch  
(220V/16A)



86-type four-legged, three-  
prong outlet and switch